

de	Vieh- und Pferdeschermaschine	Original-Betriebsanleitung
en	Cattle and Horse Clipper	Translation of the original instructions
fr	Tondeuse à chevaux et à bétail	Traduction de la notice originale
it	Tosatrice per equini e bestiame	Traduzione delle istruzioni originali
es	Esquiladora para bovinos y equinos	Traducción del manual original
nl	Vee- en paardenscheermachine	Vertaling van de oorspronkelijke gebruiksaanwijzing
da	Kreatur- og hesteklipper	Oversættelse af den originale brugsanvisning
sv	Klippmaskin för boskap och hästar	Översättning av bruksanvisning i original
nb	Klippemaskin for hest og storfe	Oversettelse av den originale brukerveiledningen
fi	Trimmeri naudoille ja hevosille	Alkuperäisten ohjeiden käänös
pt	Máquina de tosquiar gado e cavalos	Tradução do manual original
el	Κουρευτική μηχανή βοοειδών και αλόγων	Μετάφραση πρωτοτύπου οδηγιών χρήσης
ja	牛、馬用バリカン	オリジナルの取扱説明書の翻訳



Table of contents

1	Safety	3
1.1	Personal	3
1.2	Symbols and warning notes	3
1.3	Stipulated usage	4
1.4	Personal Protective Equipment (PPE)	4
1.5	Power supply	5
1.6	Animals	6
1.7	Battery	6
1.8	Clipping blades	7
1.9	Children	7
2	Generalities	8
2.1	Guarantee conditions	8
2.2	Customer service	8
2.3	Limitation of liability	8
2.4	Copyright	8
2.5	Symbols used	8
2.6	Stipulated usage	9
3	Technical data	9
3.1	Clipper	9
3.2	Charger and power supply unit	9
3.3	Battery	9
3.4	Operating conditions	9
4	Assembly and function	10
4.1	Construction	10
4.2	Functional description	10
5	Transport, packaging and storage	10
5.1	Scope of delivery	10
5.2	Packaging	11
5.3	Storage	11
6	Operation	11
6.1	Requirements at the place of use	11
6.2	Setting up the charging station	11
6.3	Charging the batteries	12
6.4	Charger status display	13
6.5	Adjusting the clipping pressure	13
6.6	Switching the clipper on and off	14
6.7	Using the clipper	14
6.8	Replacing the clipping blades	14
6.9	Lubrication	15
6.10	Cleaning	16
7	Troubleshooting	16
7.1	Safety instructions	16
7.2	Causes of malfunctions and their rectification	16
8	Spare parts	18
9	Disposal	19



IMPORTANT SAFETY INSTRUCTIONS



NOTE!

When using an electrical appliance, basic precautions are required to always be followed, including the following:

Read all instructions before using (this appliance).

1 Safety

Failure to observe the instructions and safety regulations mentioned in this manual can result in serious injury or damages to people, equipment and animals.

1.1 Personal

- The operator must be experienced in handling the animals to be clipped.
- Children are not permitted to operate the equipment.

Operation of the clipper is only permitted by personal expected to do their work reliably. Persons, whose reactivity is affected by drugs, alcohol or pharmaceuticals, are not permitted to operate the equipment.

1.2 Symbols and warning notes

Various symbols are used in the operating instructions. These symbols indicate possible hazards or bring to the user's attention such technical information that, if not complied with, may lead to personal injury and material damage or to uneconomic operation.

Hazard symbols



WARNING!

Denotes a possibly hazardous situation. Serious injury and even death can result if such situations are not avoided.



CAUTION!

Denotes a possibly hazardous situation. Light or slight injury can result if such situations are not avoided.

Information symbols



NOTE!

A note which, if not complied with, can lead to operational stop-pages or damage.

1.3 Stipulated usage

The equipment is exclusively designed and conceived for the here described use and intention.

This equipment is to be used exclusively to clip cattle and horses. The device is intended for commercial use.

The compliance of all indications in this manual is part of the intended use. Any other use is not allowed.

The device may only be operated with the power supply unit provided.



WARNING!

Expressly prohibited are:

- Using the machine on persons.
- Clipping other animals, in particular dangerous animals such as beasts of prey.

1.4 Personal Protective Equipment (PPE)



CAUTION!

DANGER OF INJURY THROUGH INCORRECT OR MISSING PROTECTIVE EQUIPMENT!

Personal protective equipment is required when working, in order to minimise the possibility of endangering health.

- ▶ Always wear the protective equipment required for the current task when performing work.



Antislip shoes. For protection against slipping on slippery underground.



Protective goggles to protect eyes from flying parts.

Close-fitting protective clothing with low resistance to tearing, with tight sleeves and no protruding parts. This is primarily to prevent injury if they become caught between moving parts of the machine.



Do not wear rings, chains or other jewellery.



Wear work gloves to protect against injury.



The acoustic emission while operating the device is typically 65 dB(A). We recommend that you always wear ear protection when working with the device.

1.5 Power supply



DANGER!

To reduce the risk of electric shock:

- ▶ Do not touch the device if it falls into water. Immediately pull the plug out of the socket.
- ▶ Do not use while bathing or in a shower.
- ▶ Do not place or store appliance where it is able to fall or be pulled into a tub or sink. Do not place in or drop into water or other liquid.
- ▶ Except when charging, always unplug this appliance from the electrical outlet immediately after using.
- ▶ Unplug this appliance before cleaning.



WARNING!

To reduce the risk of burns, fire, electric shock, or injury to persons:

- ▶ An appliance shall never be left unattended when plugged in.
- ▶ This appliance is not intended for use by persons (including children) with reduced physical, sensory or mental capabilities, or lack of experience and knowledge, unless they have been given supervision or instruction concerning use of the appliance by a person responsible for their safety. Children should be supervised to ensure that they do not play with the equipment.
- ▶ Use this appliance only for its intended use as describe in this manual. Do not use attachments not specified by the manufacturer.
- ▶ Never use the device if the cable or outlet are damaged or if it does not work properly after falling, sustaining damage or landing in water. Take the device to a service centre for inspection and repair.
- ▶ Keep the cord away from heated surfaces.
- ▶ Keep the air openings free of lint, hair, and similar objects.
- ▶ Never drop or insert any object into any opening.
- ▶ Do not use outdoors or operate while aerosol (spray) products are being used.
- ▶ Do not use this device if the comb is damaged or broken, as this can lead to injuries.
- ▶ First insert the plug into the device before plugging it into the outlet. To disconnect, turn all controls to off position (e.g. "0") then remove plug from outlet.
- ▶ Plug charger directly into receptacle, do not use an extension cord.
- ▶ Unplug charger before plugging or unplugging appliance.



WARNING!

Keep the device dry.

1.6 Animals

The appliance is intended for trimming purposes only.



WARNING!

The noise of the clipper can trouble animals. A kick, an attack or the weight of the animal can cause serious injuries. Therefore:

- ▶ Just persons being experienced in handling with animals are allowed to clip the animals.
- ▶ Fix and calm the animal sufficiently before clipping.
- ▶ Work carefully.
- ▶ Unauthorised persons are not permitted to approach the clipping place.
- ▶ Do not charge, install or leave the device in places where it is expected to:
 - Be exposed to damage from an animal, or
 - to weather effects

1.7 Battery



WARNING!

Danger of injury from incorrect handling of battery!

The rechargeable battery must be handled with particular care.

Therefore:

- ▶ Use only the original batteries.
- ▶ Do not throw the battery into the fire or expose to high temperatures. There is a risk of explosion.
- ▶ Use only undamaged batteries.
- ▶ Battery and charging station must never be exposed to direct sunlight or humidity.
- ▶ Never short-circuit the battery. Because of overheating the battery can blow out.
- ▶ Never open the battery. In case of incorrect use, escaping liquid can cause skin irritation. Avoid any contact with the liquid of the battery. In case of contact wash up the liquid with a lot of water. If the liquid enters in the eyes, wash out immediately for 10 minutes and call on a doctor without delay.
- ▶ To charge the battery, use only the detachable power supply unit supplied with this device.
- ▶ **No shipping with the battery inserted**
Remove the battery from the machine before transporting it. Batteries may only be shipped in accordance with national and international regulations bearing the prescribed labelling. The regulations for transporting defective batteries must be strictly adhered to.



CAUTION!

Reduced lifetime of battery if handled incorrectly!

The efficiency of the battery may be reduced by incorrect handling. Therefore:

- ▶ Use only the original charging station. Other charging stations could damage the battery beyond repair.
- ▶ When not in use for a longer time, separate the charging station from the power supply.
- ▶ Remove the battery and clipper from the charging station, when the station is not connected to the power supply.
- ▶ Never insert any objects into any opening of the charging station or into the charging cavity of the clipper.
- ▶ A battery no longer capable of being charged will damage the charging station and must be replaced.

1.8 Clipping blades

The blades may become hot after prolonged use.



WARNING!

Moving blades and sharp edges of the blades can cause injuries on the skin. Therefore:

- ▶ Work carefully.
- ▶ Avoid any contact with the moving blades.

1.9 Children



WARNING!

Never let the equipment unsupervised and use it very carefully when children or persons who cannot judge the dangers are nearby.

Children are not permitted to operate the equipment. Children must not be allowed to play with the device.



SAVE THESE INSTRUCTIONS!

2 Generalities

This manual facilitates a safe and efficient machine handling.

Basic requirements for a safe operation are the adherence of all the information regarding safety and operation in this manual.

Keep this manual permanently. If you hand on the equipment to other persons, provide them with this manual.

2.1 Guarantee conditions

The guarantee conditions are included in the general terms and conditions of the manufacturer.

2.2 Customer service

For technical information, our customer service and our authorised service centres are at your disposal.

Furthermore, our staff is interested in new information and experience resulting from the operation which could be useful for the improvement of our products.

2.3 Limitation of liability

All data and information in this instruction manual were arranged in consideration of the current standards and regulations and state of the art as well as our realizations and experiences of many years.

The manufacturer assumes no liability for disadvantages due to:

- Disregarding the operating instructions.
- Non-intended uses of the device.
- Assignment of not instructed personal.
- Technical modifications.
- Use of non-original spare parts.

The actual scope of delivery can differ from specially designed models, from additional ordering options or due to the latest state of the art from the here described annotations and illustrations.

2.4 Copyright

This document is protected by copyright. Any kind of reproduction or copying, in whole or in part, or the reproduction of images, even when changed, may be performed only with the written agreement of the manufacturer.

2.5 Symbols used



DANGER!

A WARNING AT THIS DANGER LEVEL DESIGNATES AN IMMINENTLY DANGEROUS SITUATION.

If the dangerous situation is not avoided, it will lead to death or serious injury.

- ▶ To avoid the danger, follow the instructions shown.



CAUTION!

A WARNING AT THIS DANGER LEVEL DESIGNATES A POSSIBLY DANGEROUS SITUATION.

If the dangerous situation is not avoided, it can lead to injury.

- ▶ To avoid the danger, follow the instructions shown.



CAUTION!

A WARNING AT THIS DANGER LEVEL DESIGNATES POSSIBLE PROPERTY DAMAGE.

If the dangerous situation is not avoided, it can lead to property damage.

- ▶ To avoid the danger, follow the instructions shown.



NOTE!

- This advice designates additional information that simplifies operation of the device.

2.6 Stipulated usage

This equipment is to be used exclusively to clip cattle and horses. The device is intended for commercial use.

Any other use or use extending beyond the above is considered unauthorised.



CAUTION!

Danger from unauthorised use!

Danger can result from improper use or use for a purpose other than that intended.

- ▶ Use the device only as intended.
- ▶ Limit yourself to the procedures described in these operating instructions.

Claims of any nature for damage resulting from unauthorised use will not be accepted.

Such use is entirely at the operator's own risk.



CAUTION!

Danger due to incorrect use!

In particular, the following applications of the device are prohibited:

- ▶ Using the machine on persons.
- ▶ Clipping other animals, in particular dangerous animals such as beasts of prey.

3 Technical data

We reserve the right to make technical changes and improvements without notice.

3.1 Clipper

Handle	Ø 54 mm
Length	280 mm
Weight with battery	1.02 kg
Motor output	see specifications plate on the device
Rotary speed	see specifications plate on the device
Noise emission	65 dB (A) (EN 60745-1:2009)
Uncertainty K	3 dB (A)
Vibration a_{hv}	4.84 m/s ² (EN ISO 5349-1:2001))

3.2 Charger and power supply unit

Voltage	see specifications plate on power supply unit and charger.
Max. current consumption	see specifications plate on power supply unit and charger.
Frequency	see specifications plate on power supply unit and charger.

3.3 Battery

Type	Li-Ion
Voltage	10.8 V
Capacity	see specifications plate on the battery

3.4 Operating conditions

Ambient temperature range	0 - 40 °C
Maximum relative humidity	75 %

4 Assembly and function

4.1 Construction

- 1 Blades
- 2 Clipperhead
- 3 Lubrication opening
- 4 Clipping pressure adjustment
- 5 Motor unit
- 6 ON/OFF switch
- 7 Interlock battery
- 8 Cord



Fig. 1

4.2 Functional description



Fig. 2

The clipper is used for clipping cattle and horses. Two comb-shaped blades are the cutting tool. The lower blade (2), which is closest to the animal's skin, is fixed and attached to the housing. The top blade (3) is agitated crossways that one. The upper blade is set in motion with the help of a pivot lever. The clipping pressure between the blades is adjusted via the adjustable head (1).

5 Transport, packaging and storage

5.1 Scope of delivery

- 1 Clipper
- 1 pair of clipping blades
- 1 charger
- 1 backup battery (depending on device)
- 1 power supply unit with plug
- 1 special screwdriver
- 1 bottle of special lubricating oil
- 1 cleaning brush
- 1 case for transport and storage
- 1 operating instructions

NOTE!



- ▶ Check to ensure the completeness of the contents and that there is no damage. Please report incomplete package contents or any apparent damage immediately to your supplier/dealer.

5.2 Packaging

For the packaging, just non-polluting material is being used.



The return of the packaging saves raw materials and reduces the volume of waste. Dispose of packaging materials that are no longer needed in accordance with locally applicable regulations.

5.3 Storage

Store clipper and accessories on the following conditions:

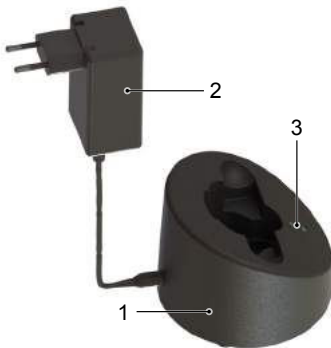
- ▶ Do not store outdoor.
- ▶ Store dry and dust-free.
- ▶ Protect against solar irradiation.
- ▶ Avoid mechanical shocks.
- ▶ Storage temperature: 0 until 40 °C
- ▶ When storing longer than 3 months, check periodically the general condition of all parts.
- ▶ When not using the clipper, store it in the case making sure it is well cleaned, lubricated and that the clipping elements are not spring loaded (risk of corrosion).

6 Operation

6.1 Requirements at the place of use

- ▶ Observe the manual (see chapter Specifications).
- ▶ Power outlets in the outer area must be equipped with a residual current circuit breaker (FI).
- ▶ The work place must have adequate lighting.
- ▶ The electrical socket must be easily accessible so that the device can be quickly disconnected from the mains.
- ▶ The location of installation must be out of reach of children.
- ▶ The charger power cord must not be taut or kinked.
- ▶ Make sure there is adequate ventilation.

6.2 Setting up the charging station



- ▶ Position the charger (1) on a fixed, level, dry and clean surface.
- ▶ Connect the power supply unit (2) to the charger.
- ▶ Plug the power supply unit into the power socket.
- ▶ The continuous green light on the lower LED (3) signals that the power supply unit is correctly plugged into the power socket and the charger is supplied with power. The charger is ready to operate (see also chapter 6.4).

Fig. 3

6.3 Charging the batteries



Fig. 4



Fig. 5



Fig. 6



Fig. 7

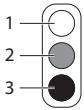
- ▶ Press both sides of the battery latch (1) and remove the battery.
- ▶ Check the battery terminals for foreign objects and dirt.

- ▶ Without applying force, insert the battery from above into the charging bay provided on the charger.

- ▶ The battery will now start charging. The status of the charging process is displayed using LEDs (see also chapter 6.4). As soon as the battery has finished charging, all the LEDs change from red to green and the charger switches to “trickle charging”.

- ▶ Push the charged battery into the clipper until the battery latch (1) engages on both sides.

6.4 Charger status display



The LEDs are shown as follows in these operating instructions:

- 1 LED switched off
- 2 LED lights up red
- 3 LED lights up green



Four charging statuses are displayed with the LEDs:

Power supply unit connected

The continuous green light on the lower LED signals that the power supply unit is correctly plugged into the power socket. The charger is supplied with power and is ready to operate.

Normal charging

The green light indicates that the battery is charged. The charging process is displayed differently depending on the status:



Discharged battery,
0 % battery charge



approx. 30 %
battery charge



approx. 75 %
battery charge



approx. 90 %
battery charge



Deep discharging

If the battery is deeply discharged the bottom LEDs lights up green. The charger will attempt to charge the battery. If after a short while the voltage has not increased, the display shows "Battery defective". If the voltage has increased, normal charging starts.



Defective battery

If the battery cannot be charged or is defective, the top LED flashes red.

6.5 Adjusting the clipping pressure



Fig. 8

Set the clipping pressure as follows before you start clipping:

- ▶ Turn the adjusting knob in the direction of the arrow until you feel resistance.
- ▶ Turn the knob another 1/4 turn in the direction of the arrow.
- ▶ After each new setting, check the cutting power on the animal and only then continue turning.
- ▶ If the clipping quality deteriorates, increase the clipping pressure by turning the adjusting knob another 1/4 turn in the direction of the arrow. If this does not produce the desired result, the blades must be replaced or sharpened.



NOTE!

- ▶ If the clipping pressure is too low, hair can gather between the clipping blades. This results in a poor clipping quality. In this case, clean the clipping blades as described in chapter 6.10.

6.6 Switching the clipper on and off



Fig. 9

- ▶ To switch the clipper on, slide the ON/OFF switch to the position **1**.
- ▶ To switch the clipper off, slide the ON/OFF switch to the position **0** (see Fig. 9).

6.7 Using the clipper

- ▶ Approach the animal from the front.
- ▶ Secure the animal to be clipped and calm it down.
- ▶ Switch the clipper on while you are in the visual range of the animal.
- ▶ Observe the animal's behaviour while clipping.
- ▶ Switch the clipper off after you have finished clipping.

6.8 Replacing the clipping blades



Fig. 10

- ▶ Switch the clipper off by sliding the switch to the position "0".
- ▶ Turn the adjusting knob in the direction of the arrow until the resistance decreases.
- ▶ Place the clipper with the comb plate screws facing upwards on a flat surface.



Fig. 11

- ▶ Loosen the comb plate screws and remove the clipping blades.

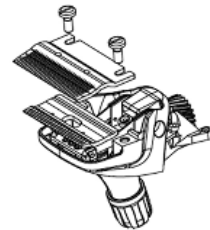
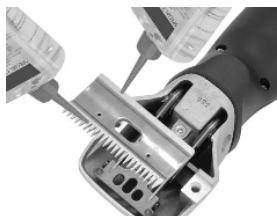


Fig. 12

NOTE!



- ▶ Make sure the clipping blades are positioned correctly when installing the new or sharpened blades.



- ▶ Place the new upper blade on the guiding tips of the pivot lever.
- ▶ Apply a few drops of oil on the polished surfaces of the upper blade.

Fig. 13



- ▶ Install the new lower blade. Align it so that the ground surface of the lower blade protrudes approx. 1.5 - 2 mm above the point of the upper blade.
- ▶ Tighten the comb plate screws.

Fig. 14



NOTE!

- ▶ Only work with sharp blades, replace blunt or defective blades without teeth. The correct resharpening of blades is only to do by special machines or by a specialist. In that case, contact your service centre.

6.9 Lubrication



To achieve a well-clipped animal and to increase the life of the device including the clipping head, it is necessary to apply a thin coat of oil between the upper and lower blades. All other moving parts of the clipping head must also be lubricated.

- ▶ Apply some drops of oil on to the clipping blades and into the lubrication opening.

Fig. 15



**CAUTION!
POSSIBLE DAMAGE TO THE CLIPPER!**

Insufficient oiling of the clipping head will lead to warming and will shorten the life of the clippers and its blades.

- ▶ Oil the clipping blades adequately during the clipping session, at least once every 15 minutes, so that they do not run dry.
- ▶ Only use the special oil supplied or a paraffin oil conforming to the ISO VG 15 specification.

NOTE!



- ▶ The provided oil is non-toxic and produces no irritation on contact with the skin or the mucous membranes. This paraffin oil degrades to some 20 % after 21 days (CEL-L-33-T-82).
- ▶ Oil the blades prior to, during and after every use.
- ▶ Oil the blades no later than when the blades leave streaks or slow down.
- ▶ Apply several drops of oil on the front and on the sides of the clipping blades (see Fig. 15)
- ▶ Immediately replace damaged or notched blades in order to avoid injuries.

6.10 Cleaning



CAUTION!

IMPROPER CLEANING.

RISK OF DAMAGING THE CLIPPER!

- ▶ Use only a dry cloth and the brush provided to clean the clipper.
- ▶ Never use compressed air for cleaning the clipper.

Housing of the clipper

- ▶ Clean the housing of the clipper with a dry cloth.

Clipping blades, clipping head and charger

- ▶ Disconnect the charger from the power supply.
- ▶ Use the brush supplied to clean the clipping blades, clipping head and charger.
- ▶ Lubricate the clipping blades as described in chapter 6.9.
- ▶ Remove any hair from the charging bay.
- ▶ Clean the terminals with a dry cloth if necessary.

7 Troubleshooting

7.1 Safety instructions



DANGER!

DANGER OF FATAL ELECTRIC SHOCK!

Fatal electric shocks can result from contact with electrically live conductors or components!

- ▶ Switch the equipment off before troubleshooting the problem.
- ▶ Repairs to electrical devices must only be carried out by the factory service department or specialists who have been trained by the manufacturer.

During the warranty period the device must be opened only by personnel authorised by the manufacturer, otherwise the warranty will be void.

7.2 Causes of malfunctions and their rectification

Malfunction	Cause	Rectification
Upper blades moving too little.	Leaf springs broken.	Notify customer service.
	Eccentric square or eccentric shaft worn (insufficient lubrication).	
Top blade does not move	Defective gear wheel.	Notify customer service.
Adjusting knob jammed.	Thread dirty or rusty.	Notify customer service.
	Pressure spring jammed.	
Leaf springs in the head mount are too loose.	Comb plate screws loose.	Tighten the comb plate screws.

Malfunction	Cause	Rectification
Play between pivot lever and leaf spring.	Leaf springs and/or cylinder head screws worn.	Notify customer service.
Pivot lever difficult to move up and down.	Centring sleeve lost.	Notify customer service.
Clipper cuts badly or not at all	Clipper blades blunt	Notify customer service.
	Clipper blades have not been correctly ground	
	Clipper blades are not oiled	Lubricate the clipping blades every 15 minutes.
	Clipping pressure too low.	Increase the clipping pressure, as described in chapter 6.5.
	Leaf springs broken.	Notify customer service.
	The animal's hair is wet.	Only clip dry hair.
	Hairs jammed between top and bottom blades.	Remove the clipping blades; clean, lubricate and install them again; set the clipping pressure.
	Too much play at the clipping head.	Notify customer service.
	Clipping blades not properly aligned.	Align the clipping blades correctly, see Fig. 14.
Motor does not run or stops immediately.	Clipping pressure too strong.	Reduce the clipping pressure, as described in chapter 6.5. Have the blades sharpened.
	Battery is dead.	Charge battery.
	Contacts dirty.	Switch clipper off and clean the contacts.
	Faulty battery.	Replace battery.
	Smell of burning from the motor housing. Motor burned out.	Notify customer service.
	Clipperhead blocked.	Remove jamming.
	Motor and/or electronics defective.	Notify customer service.
Motor runs very slowly.	Clipper blades were not oiled sufficiently.	Lubricate the clipping blades.
	Clipping pressure too strong.	Reduce the clipping pressure, as described in chapter 6.5.
	Battery almost discharged.	Charge battery.
	Motor and/or electronics defective.	Notify customer service.
Motor unit becomes hot.	Clipping pressure too strong.	Reduce the clipping pressure, as described in chapter 6.5.
	Motor faulty.	Notify customer service.
Running time of a fully charged battery is too short and / or blades are getting hot.	Clipper blades were not oiled sufficiently	Oil clipper blades.
	Flat, not fully charged or faulty battery is being used.	Only use intact, fully charged original batteries.

Malfunction	Cause	Rectification
Lowest LED on charger is not lit.	Charging station is not connected to the power supply.	Connect the charging station to the power supply.
	Electronics or power supply unit defective.	Notify customer service.
Normal charging does not start when the discharged battery is inserted.	Battery terminals and/or charger are dirty.	Clean contacts.
	Faulty battery.	Replace battery.
	Electronics are defective.	Notify customer service.
Bottom LED lights up green.	Battery is deeply discharged, the charger is trying to boost the battery voltage.	If it is successful, normal charging starts. (Never store batteries in the discharged state).
		If it is not successful, the lowest LED lights up red (see the following table).
Top LED lights up red.	Faulty battery.	Replace battery.

8 Spare parts

See spare parts list at the end of these operating instructions.



CAUTION!

FAULTY SPARE PARTS MAY CAUSE DAMAGES, MALFUNCTIONS OR TOTAL LOSS AND MAY REDUCE SECURITY.

- ▶ Use only original spare parts from the manufacturer. Obtain spare parts from an authorised dealer or directly from the manufacturer.



NOTE!

- ▶ If non-approved parts are used, all warranty, service, compensation and liability claims against the manufacturer or its employees, dealers and representatives will be forfeited.

During the warranty period the device must be opened only by personnel authorised by the manufacturer, otherwise the warranty will be void.

Pos. No.	Description	Number	Pos. No.	Description	Number
1	Clipping head complete without blades	1	33	Lower housing cover	1
2	Tension nut cattle	1	34	Motor holder, front	1
3	Distance screw	1	35	Motor holder, rear	1
4	Tension sleeve	1	36	Li-Ion battery 10.8 V / 2.85 Ah	1
5	PH screw M5x14	2	37	PCB clipper	1
6	Clipper head case	1	38	Switch contact	1
7	Pressure spring	1	39	PH screw M2.6x6	2
8	Pressure plate	1	40	Top housing shell, complete	1
9	Eccentric square	1	41	Cord	1
10	Socket head cap screw with shank M3x6	2	45	Motor complete	1
11	Leaf spring	2	50	Complete charger	1
12	Turning lever	1	51	Charging station housing	1

Pos. No.	Description	Number	Pos. No.	Description	Number
13	Comb plate screw cattle/horse	2	52	PT-screw Kombitorx KA30x16	15
14	Centring bush complete	2	53	Baseplate to charging station	1
15	Circlip for shaft size 3.73	1	54	Fibre optic conductor to charging station	1
16	Circlip for shaft size 6	1	55	PCB charging station	1
17	Crankshaft cattle	1	60	Power supply unit	1
18	Crank spindle sleeve complete	1	61	Plug EU	opt.
19	Cogwheel Z27 Cattle	1	62	Plug AU Type 1 Plug AU/ARG Type 2	opt.
27	Rubber foot	3	63	Plug GB	opt.
30	Upper housing cover	1	64	Plug US Type 1 Plug US-JP Type 2	opt.
31	Switch lever	1	65	Plug KR	opt.
32	Catch spring with contact	1	66	Plug BR	opt.

9 Disposal



CAUTION!

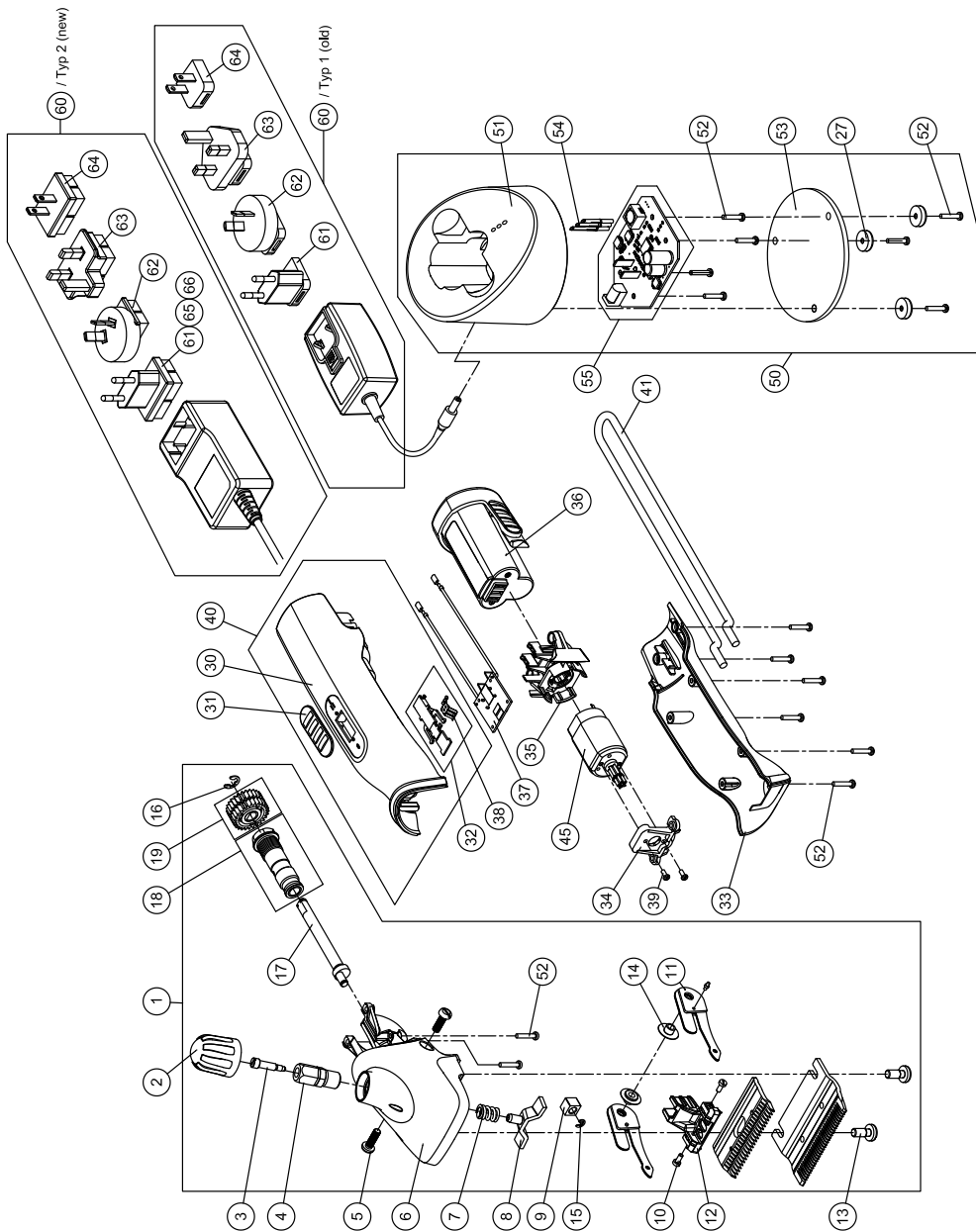
Environmental damages when disposing incorrectly!

- ▶ Electrical waste, lubricants and other consumable materials are subject to special regulations regarding disposal. They can only be disposed of only through qualified specialists!



NOTE!

- ▶ Dispose of the clipper at a service centre or nearby electrical workshop.



garantia

Item	Artico	Tuote	
Artículo	Artikel	Προϊόν	
Article	Artikel	アイテム	
Artikel	Artikel		
Articolo	Artikkel		

garantie

Serial no.	No. de série	Sarjanro	
No. de serie	Serie nr.	Αρ. σειράς	
No. de série	Serie Nr.	シリアル	
Serienr.	Serienr.		
No. di serie	Serie nummer		

warranty

Date of purchase	Data di vendita	Köpdatum	
Fecha de compra	Data de compra	Kjøpsdato	
Date d'achat	Datum van aankoop	Ostopäivä	
Kaufdatum	Købsdato	Ημερομηνία αγοράς	
		購入日	

Stamp and signature	Stämpel och Sello y firma	namnteckning	
Cachet et signature	Stempel og underskrift	fra forretningen	
Stempel und Unterschrift	Myyjän leima ja allekirjoitus	irjoitus	
Timbro e firma	Σφραγίδα και υπογραφή	σταμπά και ονομασία	
Carimbo e assinatura	Stampel en handtekening	스탬프와 서명	
Stempel og underskrift			

In case of claim, please return your machine with the instruction manual and the warranty card directly to your local distributor. Please do not cut off the warranty card from the instruction manual.

© 2022 Heiniger AG. All rights reserved.

This instruction manual may not be duplicated or distributed, neither completely nor in extracts, or by electronic or mechanical means (including photocopying), transmitted or used for the purpose of competition without authorisation from Heiniger AG.

Subject to change without notice.

Original-Betriebsanleitung
 Translation of the original instructions
 Traduction de la notice originale
 Traduzione delle istruzioni originali
 Traducción del manual original
 Vertaling van de originele gebruikshandleiding
 Oversættelse af den originale brugsanvisning
 Översättning av bruksanvisning i original
 Oversettelse av den originale brukerveiledningen
 Alkuperäisten ohjeiden käännös
 Tradução do manual original
 Μετάφραση πρωτοτύπου οδηγιών χρήσης
 オリジナルの取扱説明書の翻訳

Contact:

Heiniger AG
 Industrieweg 8
 CH - 3360 Herzogenbuchsee
 Switzerland

Tel. +41 (0)62 956 92 00
 marketing(at)heiniger.com



Le produit est recyclable, soumis à la responsabilité élargie du producteur et doit faire l'objet d'un tri selectif

